

Integro 51 II Basic

Item number:

€ 821,29

EAN: 5703347532726

Specifications

Control

Soft touch



Tilkøb af montering

Name	Number	Price
Monteringservice 2	999.99.5002.0	€ 16.759,91

Aftrækstilbehør

Name	Number	Price
Mini Plasmex	535.21.1500.9	€ 607,86
Thermex Plasmex® filter I - Round	535.10.1000.9	€ 911,29
Carbon Flex Filter	535.46.1000.9	€ 304,44
flex hose. Ø 162 mm per meters	800.70.4162.9	€ 35,29
Hose set Ø160 1.2 meters	800.70.6160.9	€ 66,54
Hose set pvc ø162 mm	800.70.7160.9	€ 87,70
Sound- and condensation-insulated flex hose Ø 162 mm	810.16.5160.9	€ 91,74
Tension band 6 60-165 mm	815.16.8206.9	€ 17,14
Exhaust set Ø 160 mm	830.51.2162.9	€ 98,79
Exhaust set - sound/condensation insulated Ø162 mm	830.51.6162.9	€ 178,43
Recirculation filter for Integro 51 II Basic	535.21.8450.9	€ 30,24
Duct/cover Integro 51 II / Premium	537.21.4108.9	€ 107,86

Thermex Link

Name	Number	Price
Safemex stove guard - 1 phase	536.06.1000.0	€ 839,71
Thermex Trigger Link Module	536.99.1000.9	€ 231,85
Thermex Plasmex® Smart Link Module	536.99.1150.9	€ 437,50

Integro 51 II basic 60 cm antracit

Item number: 513.21.0062.2

€ 773,19

EAN: 5703347533297

A

Integro 51 II Basic Antracit 60 cm is a built-in hood that is fully integrated into the wall cabinet. Simple installation and design.

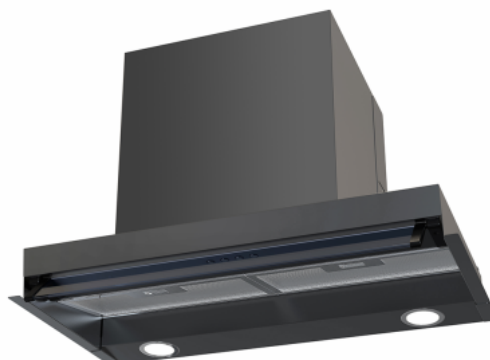
Integro 51 II Basic Antracit 60 cm from Thermex is a fully integrated built-in hood designed for installation under a wall cabinet. Made of antracit painted steel with a tilting glass panel in the front, it features two decorative grease filters and two LED lamps. Cleaning is a simple affair - a quick wipe with a damp cloth, and the filters can be washed in the dishwasher. The installation is straightforward, as the hood replaces the bottom of the cabinet, making it easy to integrate into the kitchen's design.

The operation of Integro 51 II Basic Antracit is straightforward with push buttons. It offers three speed settings and an on/off function for the light, allowing the user to customize the suction power and lighting as needed.

With a suction capacity of up to 334 m³/h, Integro 51 II Basic Antracit can effectively handle the extraction of vapors and odors during cooking. At the same time, the noise level is kept low at only 55 dB(A), ensuring a comfortable and quiet operation, even during intensive use.

Specifications

Minimum airflow [m ³ /h]	184
Minimum-Soundpower [dB(A)]	55
Maximum-airflow [m ³ /h]	334
Maximum-Soundpower [dB(A)]	65
Energy consumption [W]	73
Control	Soft touch
Material	Black painted steel and Black glass



Tilkøb af montering

Name	Number	Price
Monteringservice 2	999.99.5002.0	€ 16.759,91

Aftrækstilbehør

Name	Number	Price
Mini Plasmex	535.21.1500.9	€ 607,86
Thermex Plasmex® filter I - Round	535.10.1000.9	€ 911,29
Carbon Flex Filter	535.46.1000.9	€ 304,44
flex hose. Ø 162 mm per meters	800.70.4162.9	€ 35,29
Hose set Ø160 1.2 meters	800.70.6160.9	€ 66,54
Hose set pvc ø162 mm	800.70.7160.9	€ 87,70
Sound- and condensation-insulated flex hose Ø 162 mm	810.16.5160.9	€ 91,74
Tension band 6 60-165 mm	815.16.8206.9	€ 17,14
Exhaust set Ø 160 mm	830.51.2162.9	€ 98,79
Exhaust set - sound/condensation insulated Ø162 mm	830.51.6162.9	€ 178,43
Recirculation filter for Integro 51 II Basic	535.21.8450.9	€ 30,24
Duct/cover Integro 51 II / Premium	537.21.4108.9	€ 107,86

Thermex Link

Name	Number	Price
Safemex stove guard - 1 phase	536.06.1000.0	€ 839,71
Thermex Trigger Link Module	536.99.1000.9	€ 231,85
Thermex Plasmex® Smart Link Module	536.99.1150.9	€ 437,50

Integro 51 II basic 90 cm antracit

Item number: 513.21.0092.2

€ 912,30

EAN: 5703347533303

A

Integro 51 II Basic Antracit 90 cm is a built-in hood that is fully integrated into the wall cabinet. Simple installation and design.

Integro 51 II Basic Antracit 90 cm from Thermex is a fully integrated built-in hood designed for installation under a wall cabinet. Made of antracit painted steel with a tilting glass panel in the front, it features two decorative grease filters and two LED lamps. Cleaning is a simple affair - a quick wipe with a damp cloth, and the filters can be washed in the dishwasher. The installation is straightforward, as the hood replaces the bottom of the cabinet, making it easy to integrate into the kitchen's design.

The operation of Integro 51 II Basic Antracit is straightforward with push buttons. It offers three speed settings and an on/off function for the light, allowing the user to customize the suction power and lighting as needed.

With a suction capacity of up to 334 m³/h, Integro 51 II Basic Antracit can effectively handle the extraction of vapors and odors during cooking. At the same time, the noise level is kept low at only 55 dB(A), ensuring a comfortable and quiet operation, even during intensive use.

Specifications

Minimum airflow [m ³ /h]	184
Minimum-Soundpower [dB(A)]	55
Maximum-airflow [m ³ /h]	334
Maximum-Soundpower [dB(A)]	65
Energy consumption [W]	73
Control	Soft touch
Material	Black painted steel and Black glass



Tilkøb af montering

Name	Number	Price
Monteringservice 2	999.99.5002.0	€ 16.759,91

Aftrækstilbehør

Name	Number	Price
Mini Plasmex	535.21.1500.9	€ 607,86
Thermex Plasmex® filter I - Round	535.10.1000.9	€ 911,29
Carbon Flex Filter	535.46.1000.9	€ 304,44
flex hose. Ø 162 mm per meters	800.70.4162.9	€ 35,29
Hose set Ø160 1.2 meters	800.70.6160.9	€ 66,54
Hose set pvc ø162 mm	800.70.7160.9	€ 87,70
Sound- and condensation-insulated flex hose Ø 162 mm	810.16.5160.9	€ 91,74
Tension band 6 60-165 mm	815.16.8206.9	€ 17,14
Exhaust set Ø 160 mm	830.51.2162.9	€ 98,79
Exhaust set - sound/condensation insulated Ø162 mm	830.51.6162.9	€ 178,43
Recirculation filter for Integro 51 II Basic	535.21.8450.9	€ 30,24
Duct/cover Integro 51 II / Premium	537.21.4108.9	€ 107,86

Thermex Link

Name	Number	Price
Safemex stove guard - 1 phase	536.06.1000.0	€ 839,71
Thermex Trigger Link Module	536.99.1000.9	€ 231,85
Thermex Plasmex® Smart Link Module	536.99.1150.9	€ 437,50

Integro 51 II Basic 60 cm

Item number: 513.21.0068.2

€ 773,19

EAN: 5703347532726

A

Integro 51 II Basic 60 cm is a built-in hood that is fully integrated into the wall cabinet. Simple installation and design.

Integro 51 II Basic 60 cm from Thermex is a fully integrated built-in hood designed for installation under a wall cabinet. Made of stainless steel with a tilting glass panel in the front, it features two decorative grease filters and two LED lamps. Cleaning is a simple affair - a quick wipe with a damp cloth, and the filters can be washed in the dishwasher. The installation is straightforward, as the hood replaces the bottom of the cabinet, making it easy to integrate into the kitchen's design.

The operation of Integro 51 II Basic is straightforward with push buttons. It offers three speed settings and an on/off function for the light, allowing the user to customize the suction power and lighting as needed.

With a suction capacity of up to 334 m³/h, Integro 51 II Basic can effectively handle the extraction of vapors and odors during cooking. At the same time, the noise level is kept low at only 55 dB(A), ensuring a comfortable and quiet operation, even during intensive use.



Specifications

Minimum airflow [m ³ /h]	184
Minimum-Soundpower [dB(A)]	55
Maximum-airflow [m ³ /h]	334
Maximum-Soundpower [dB(A)]	65
Energy consumption [W]	73
Control	Soft touch
Material	Stainless steel and glass

Tilkøb af montering

Name	Number	Price
Monteringservice 2	999.99.5002.0	€ 16.759,91

Aftrækstilbehør

Name	Number	Price
Mini Plasmex	535.21.1500.9	€ 607,86
Thermex Plasmex® filter I - Round	535.10.1000.9	€ 911,29
Carbon Flex Filter	535.46.1000.9	€ 304,44
flex hose. Ø 162 mm per meters	800.70.4162.9	€ 35,29
Hose set Ø160 1.2 meters	800.70.6160.9	€ 66,54
Hose set pvc ø162 mm	800.70.7160.9	€ 87,70
Sound- and condensation-insulated flex hose Ø 162 mm	810.16.5160.9	€ 91,74
Tension band 6 60-165 mm	815.16.8206.9	€ 17,14
Exhaust set Ø 160 mm	830.51.2162.9	€ 98,79
Exhaust set - sound/condensation insulated Ø162 mm	830.51.6162.9	€ 178,43
Recirculation filter for Integro 51 II Basic	535.21.8450.9	€ 30,24
Duct/cover Integro 51 II / Premium	537.21.4108.9	€ 107,86

Thermex Link

Name	Number	Price
Safemex stove guard - 1 phase	536.06.1000.0	€ 839,71
Thermex Trigger Link Module	536.99.1000.9	€ 231,85
Thermex Plasmex® Smart Link Module	536.99.1150.9	€ 437,50

Integro 51 II Basic 90 cm

Item number: 513.21.0098.2

€ 912,30

EAN: 5703347532733

A

Integro 51 II Basic 90 cm is a built-in hood that is fully integrated into the wall cabinet. Simple installation and design.

Integro 51 II Basic 90 cm from Thermex is a fully integrated built-in hood designed for installation under a wall cabinet. Made of stainless steel with a tilting glass panel in the front, it features two decorative grease filters and two LED lamps. Cleaning is a simple affair - a quick wipe with a damp cloth, and the filters can be washed in the dishwasher. The installation is straightforward, as the hood replaces the bottom of the cabinet, making it easy to integrate into the kitchen's design.

The operation of Integro 51 II Basic is straightforward with push buttons. It offers three speed settings and an on/off function for the light, allowing the user to customize the suction power and lighting as needed.

With a suction capacity of up to 334 m³/h, Integro 51 II Basic can effectively handle the extraction of vapors and odors during cooking. At the same time, the noise level is kept low at only 55 dB(A), ensuring a comfortable and quiet operation, even during intensive use.



Specifications

Minimum airflow [m ³ /h]	184
Minimum-Soundpower [dB(A)]	55
Maximum-airflow [m ³ /h]	334
Maximum-Soundpower [dB(A)]	65
Energy consumption [W]	73
Control	Soft touch
Material	Stainless steel and glass

Tilkøb af montering

Name	Number	Price
Monteringservice 2	999.99.5002.0	€ 16.759,91

Aftrækstilbehør

Name	Number	Price
Mini Plasmex	535.21.1500.9	€ 607,86
Thermex Plasmex® filter I - Round	535.10.1000.9	€ 911,29
Carbon Flex Filter	535.46.1000.9	€ 304,44
flex hose. Ø 162 mm per meters	800.70.4162.9	€ 35,29
Hose set Ø160 1.2 meters	800.70.6160.9	€ 66,54
Hose set pvc ø162 mm	800.70.7160.9	€ 87,70
Sound- and condensation-insulated flex hose Ø 162 mm	810.16.5160.9	€ 91,74
Tension band 6 60-165 mm	815.16.8206.9	€ 17,14
Exhaust set Ø 160 mm	830.51.2162.9	€ 98,79
Exhaust set - sound/condensation insulated Ø162 mm	830.51.6162.9	€ 178,43
Recirculation filter for Integro 51 II Basic	535.21.8450.9	€ 30,24
Duct/cover Integro 51 II / Premium	537.21.4108.9	€ 107,86

Thermex Link

Name	Number	Price
Safemex stove guard - 1 phase	536.06.1000.0	€ 839,71
Thermex Trigger Link Module	536.99.1000.9	€ 231,85
Thermex Plasmex® Smart Link Module	536.99.1150.9	€ 437,50

Integro 51 II Basic 80 cm

Item number: 513.21.0088.2

€ 803,43

EAN: 5703347533419

A

Integro 51 II Basic 80 cm is a built-in hood that is fully integrated into the wall cabinet. Simple installation and design.

Integro 51 II Basic 80 cm from Thermex is a fully integrated built-in hood designed for installation under a wall cabinet. Made of stainless steel with a tilting glass panel in the front, it features two decorative grease filters and two LED lamps. Cleaning is a simple affair - a quick wipe with a damp cloth, and the filters can be washed in the dishwasher. The installation is straightforward, as the hood replaces the bottom of the cabinet, making it easy to integrate into the kitchen's design.

The operation of Integro 51 II Basic is straightforward with push buttons. It offers three speed settings and an on/off function for the light, allowing the user to customize the suction power and lighting as needed.

With a suction capacity of up to 334 m³/h, Integro 51 II Basic can effectively handle the extraction of vapors and odors during cooking. At the same time, the noise level is kept low at only 55 dB(A), ensuring a comfortable and quiet operation, even during intensive use.



Specifications

Minimum airflow [m ³ /h]	184
Minimum-Soundpower [dB(A)]	55
Maximum-airflow [m ³ /h]	334
Maximum-Soundpower [dB(A)]	65
Energy consumption [W]	73
Control	Soft touch
Material	Stainless steel and glass

Tilkøb af montering

Name	Number	Price
Monteringservice 2	999.99.5002.0	€ 16.759,91

Aftrækstilbehør

Name	Number	Price
Mini Plasmex	535.21.1500.9	€ 607,86
Thermex Plasmex® filter I - Round	535.10.1000.9	€ 911,29
Carbon Flex Filter	535.46.1000.9	€ 304,44
flex hose. Ø 162 mm per meters	800.70.4162.9	€ 35,29
Hose set Ø160 1.2 meters	800.70.6160.9	€ 66,54
Hose set pvc ø162 mm	800.70.7160.9	€ 87,70
Sound- and condensation-insulated flex hose Ø 162 mm	810.16.5160.9	€ 91,74
Tension band 6 60-165 mm	815.16.8206.9	€ 17,14
Exhaust set Ø 160 mm	830.51.2162.9	€ 98,79
Exhaust set - sound/condensation insulated Ø162 mm	830.51.6162.9	€ 178,43
Recirculation filter for Integro 51 II Basic	535.21.8450.9	€ 30,24
Duct/cover Integro 51 II / Premium	537.21.4108.9	€ 107,86

Thermex Link

Name	Number	Price
Safemex stove guard - 1 phase	536.06.1000.0	€ 839,71
Thermex Trigger Link Module	536.99.1000.9	€ 231,85
Thermex Plasmex® Smart Link Module	536.99.1150.9	€ 437,50